

Travel with The Met

September 28–October 9, 2023

Journey to the Deep North of Japan: Tokyo to Hokkaido Aboard the *Train Suite Shiki-shima*

with John T. Carpenter,
Mary Griggs Burke
Curator of Japanese Art,
Department of Asian Art



THE
MET

Train Suite Shiki-shima

This exclusive cruise train, launched in 2017, offers an unparalleled standard of Japanese luxury and hospitality. Designed by Ken Okuyama, celebrated for his work with Ferrari, Maserati, and Porsche, *Train Suite Shiki-shima* highlights traditional Japanese aesthetics with a futuristic spirit.

Admire ancient forests, mountains, and seaside vistas from your front-row seat within the glass-enclosed observatory cars. Or, for guests in the two-floor Maisonette Suite Room, watch from your window as you relax in your own *tatami* room or from your own cypress bath—unique to Japan. The open and elegant Deluxe Suite Room features high ceilings, large windows, and a fireplace. Every Suite Room is furnished with a shower and bathroom, with wall panels that use a very rare Joboji lacquer from Iwate Prefecture and closets that are designed to resemble traditional chests from Sendai City.

Savor exquisite meals tenderly prepared by the imaginative chef. Through his dishes, he highlights the unique culture of each region on the journey, with great attention to the finest seasonal, local ingredients. Apart from stopovers, train crew members are on standby at the bar on a 24-hour basis. Enjoy an original cocktail, the finest single malt whiskey, or a light meal whenever you choose. Connect with fellow travelers in the Lounge Komorebi, whose decoration evokes the interplay of light and leaves when sunlight shines through trees, and is furnished with beautiful local crafts and artwork.





Journey to the Deep North of Japan Aboard the *Train Suite Shiki-shima*

Dear Members and Friends of The Metropolitan Museum of Art,

As a country with a love of tradition and an endless fascination with novelty, Japan is a dynamic destination that has always captivated me as a specialist in Asian art and culture. Join me in late September 2023 for The Met's first-ever journey by train to Japan's "Deep North," recalling the title of the travel diary of the celebrated haiku poet Matsuo Basho, *The Narrow Road to the Deep North*. Throughout this tour, we will explore traditional and modern Japanese art, literature, and performance created over the course of millennia. We will board the exquisitely designed *Train Suite Shiki-shima*, whose title evokes an ancient poetic name of Japan, literally meaning "island of the four seasons." I am excited to share this journey with you, experiencing Japanese luxury, magnificent art, engineering, and design at their pinnacles.

Starting with two nights in electrifying Tokyo, I will introduce you to some of the city's most distinguished private collectors and museum displays. We will then board the elegant, champagne-gold *Train Suite Shiki-shima*, traveling from Tokyo to Hokkaido, the northernmost of Japan's main islands and home to the indigenous Ainu people. From the comfort of the train's glass-enclosed observatory cars, we will admire constantly evolving scenery as we travel up the west coast of Japan. Over four days, we will step off to discover famous hot springs, intriguing museums, an active archaeological site from the prehistoric Jomon period, and the workshops of skilled local artists. We will also enjoy sumptuous local and international cuisine along the way.

After our return journey down the eastern coast of Honshu, we will enjoy behind-the-scenes explorations of art in the ancient capitals of Nara and Kyoto, home to wonderful museums and UNESCO-listed shrines. On our way to Kyoto, a highlight will be the new seaside art space established by Hiroshi Sugimoto, the noted photographer, architect, and head of the Tokyo-based architectural firm New Material Research Laboratory.

This is a unique opportunity to fully immerse yourself in Japan's artistic and natural splendors, with rare access to the truly unforgettable *Train Suite Shiki-shima*. I hope you join me in September 2023.

Sincerely,

John T. Carpenter

Mary Griggs Burke Curator of Japanese Art, Department of Asian Art
The Metropolitan Museum of Art



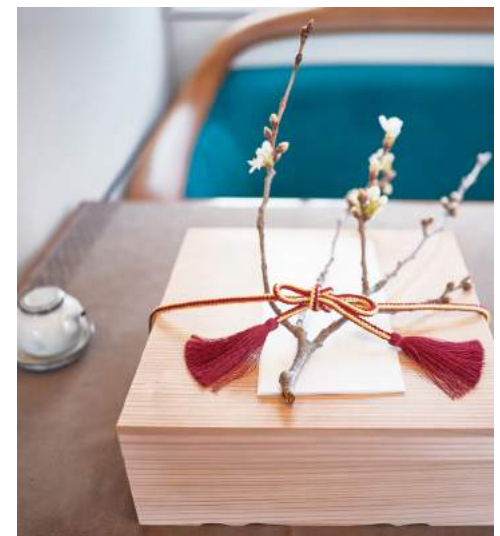
Traveling with You

John T. Carpenter

John T. Carpenter, the Mary Griggs Burke Curator of Japanese Art in the Department of Asian Art, has been with The Met since 2011. From 1999 to 2011, he taught the history of Japanese art at the School of Oriental and African Studies (SOAS), University of London, and served as head of the London office of the Sainsbury Institute for the Study of Japanese Arts and Cultures. He has published widely on Japanese art and has helped organize numerous exhibitions at the Museum, including *Designing Nature* (2012–13), *Birds in the Art of Japan* (2013), *Brush Writing in the Arts of Japan* (2013–14), *Celebrating the Arts of Japan* (2015–17), *The Poetry of Nature* (2018–2019), and *The Tale of Genji: A Japanese Classic Illuminated* (2019).

Trip Highlights

- Experience the pinnacle of Japanese luxury aboard the ultra-exclusive *Train Suite Shiki-shima*, enjoying traditional hospitality and exquisite regional cuisine as you journey through the serene mountains and colorful scenery of western Honshu, north to Hokkaido
- Enjoy an exclusive tour and reception at Tokyo's Yu-un, the private museum and residence of Takeo Obayashi, one of Japan's foremost collectors of Asian and Western contemporary art
- Delight in private, expert-guided access to some of Japan's most spectacular museums and private art collections, including the superb modern displays at the recently reopened Kyoto City Kyocera Museum
- Spend a night in comfort at a traditional *onsen* for a refreshing therapeutic soak in a hot spring bath
- Savor a rare and private dinner with an art collector and historian with an exclusive traditional music performance and Kyoto delicacies on the grounds of a medieval Shinto shrine



Dinner service on *Train Suite Shiki-shima*

Journey to the Deep North of Japan Aboard the *Train Suite Shiki-shima* September 28–October 9, 2023



contemporary art and architectural scene. Stop for lunch in Roppongi Hills. In the late afternoon, delight in a private tour and wine reception at a fabulous modern mansion with a great contemporary art collection. This evening, indulge in a delicious dinner at one of the hotel's fine restaurants. B, L, R, D

Lounge Komorebi, followed by a special full-course dinner of French cuisine prepared by *Train Suite Shiki-shima* executive chef Shigeru Sato. B, L, D

Tokyo / Embark *Train Suite Shiki-shima*

Monday, October 2

After checking out of the hotel, board the elegant *Train Suite Shiki-shima* at historic Ueno Station for a welcome lunch and beautiful views of the Japanese countryside. Enjoy delicate, yet bold Japanese cuisine made from carefully selected ingredients. Savor dishes made with seasonal vegetables by a renowned Tokyo chef, including his famous vegetable *nikogori* (natural jelly broth). Gaze out over sweeping views of Japan's incredible landscapes from the train window. As you make your way to Hakodate, enjoy cocktails and evening views in the

Hakodate

Tuesday, October 3

Disembark in the morning at Hakodate, a place of bustling trade ever since the prehistoric Jomon period (11,000-300 B.C.). With the arrival of Commodore Perry in 1854, Hakodate developed as a primary gateway to Japan. After departing the station on a specially reserved Hakodate city tram, enjoy local seafood dishes during breakfast at a renowned restaurant. After lunch on board *Train Suite Shiki-shima*, venture to Upopoy National Ainu Museum and Park. Experience the myriad charms of Ainu culture amongst the scenic beauty of the shores of Lake Poroto. Facilities include the National Ainu Museum, which features exhibits showcasing the daily lives, culture, and history of Hokkaido's indigenous Ainu, and the Cultural Exchange

Departure

Thursday, September 28

Depart for Tokyo on an overnight flight.

Tokyo, Japan

Friday, September 29

Upon arrival, transfer individually to the luxurious Peninsula Tokyo Hotel. The remainder of the afternoon is at leisure. In the evening, enjoy a welcome reception at the hotel. R

Tokyo

Saturday, September 30

Explore various special exhibitions at the Tokyo National Museum and other museums in the area this morning. After lunch, visit the atelier of an organization of weavers dedicated to creating unique textiles through a combination of traditional Japanese practices and experimental technologies. Later this afternoon, enjoy an exclusive guided tour and reception at one of Tokyo's most important private contemporary art galleries. Gather this evening for our welcome dinner at a celebrated restaurant. B, L, R, D

Tokyo

Sunday, October 1

In the morning, enjoy a lecture by John Carpenter, followed by an exclusive exploration of some of the finest private museums and collections in the Roppongi district, the vibrant heart of Tokyo's



Restaurant Dining car aboard *Train Suite Shiki-shima* (top) and *Takinoya onsen* in Noboribetsu (above)



Aomori Museum of Art, photo by bryan

Hall, where you can watch performances of traditional Ainu dancing, recognized by UNESCO on their Intangible Cultural Heritage list, and *mukkuri* (a type of mouth harp). Spend tonight at one of two *Ryokan* in Hokkaido to experience the traditional luxury and cuisine of the region. B, L, D

Aomori or Kuroishi

Wednesday, October 4

After reboarding *Train Suite Shiki-shima*, lunch featuring Hokkaido-style French cuisine will be served on board the train. Meticulously prepared by master chefs from Sapporo's Molière Café, enjoy a fusion of French cuisine and the finest of rustic Hokkaido flavors. After the meal, choose between two ways to spend the day.

You may enjoy the option of exploring painstakingly restored buildings from the Jomon period, and visit the Sannai-Maruyama archaeological site, Japan's largest complex of ruins, dating back to this fascinating era. With the assistance of an expert guide, participate in the rare viewing of an active excavation in progress. Travel to the Aomori Museum of Art, home to vast stage backdrops painted by Chagall, where we will enjoy a dinner prepared by chef Masanori Kawaguchi, head chef of the Hotel Jogakura in Aomori.

Alternatively, visit Kuroishi, which is known for the charming Nakamachi Komise Street, a thoroughfare lined with wooden arcades that have been protected from the area's heavy snowfalls since the shogunate days of the Edo Era. The cultural hallmarks of Nebuta and Neputa festivals that have spread throughout Aomori Prefecture took deep root in Kuroishi, where the Kuroishi Neputa Festival is particularly known for its vibrant

and delicate art. Create your very own Uchiwa fan emblazoned with a cutout of Neputa art at the Uchiwa Fan Workshop. This evening, savor dishes prepared by the chef Michiaki Sasamori of Osteria Enoteca da Sasino. Upon returning to the train, have a drink in the Lounge Komorebi while watching the evening scenery from the train window. B, L, D

Naruko Onsen / Tokyo / Disembark

Thursday, October 5

After a leisurely breakfast on board the train, enjoy a pleasant morning stroll around Naruko Onsen, which is famous in Eastern Japan as *Oshu Sanmeito* (one of Oshu's three greatest hot springs). As you explore this hot spring town, admire the adorable faces of traditional wooden Kokeshi dolls that peer out from shop windows. Return to the train, and enjoy sushi prepared by masters with seasonal Niigata ingredients and locally sourced fish. Delight in a festive farewell reception in the private lounge after the *Train Suite Shiki-shima* pulls into Tokyo's Ueno station. Following disembarkation, check into the deluxe Peninsula Tokyo hotel, and enjoy dinner at one of its restaurants. B, L, R, D

Tokyo / Odawara / Kyoto

Friday, October 6

After checking out of the hotel, journey by bullet train to Odawara, at the foot of Mount Fuji. There, discover the Enoura Observatory, a seaside exhibition space on a picturesque citrus grove with stunning views of Sagami Bay. Established by contemporary artist Hiroshi Sugimoto, the Observatory houses an art gallery, a stone stage, optical glass stage, tea house, and garden. Board the bullet train

to ancient Kyoto, home to over 2,000 temples, shrines, meditation halls, and historic sites. Check into your hotel, and this evening, attend a lecture by John Carpenter, followed by dinner at one of the hotel's restaurants. B, L, D

Kyoto / Nara / Kyoto

Saturday, October 7

After breakfast, travel to the ancient city of Nara. Explore its incomparable collection of temples and shrines dating to the 8th century, when Nara was the capital of Japan. Stop at Todai-ji, once the chief Buddhist temple complex in Japan, a landmark of ancient engineering. Tour Daibutsu-den, once the largest wooden building in the world, which houses an impressive 50-foot-tall bronze Buddha. Next, visit Kasuga Taisha, the most celebrated Shinto shrine in Nara, and Kofuku-ji Temple, famous for its Buddhist statuary. Afterwards, head over to the Horyu-ji Temple, a UNESCO World Heritage Site. There, a highlight is the *Kondo* (main hall), with its collection of statues, and the temple's five-story pagoda stands among the world's oldest surviving wooden structures. On the way back to your hotel in Kyoto, stop for an exclusive reception and dinner at a restored medieval Shinto shrine, the residence of a renowned East Asian art specialist and author, indulging in local delicacies while enjoying a traditional music performance and a wonderful private collection. B, L, R, D

Kyoto

Sunday, October 8

This morning, explore renowned temples rich in history for Sutra writing and tea ceremonies. Tour the newly opened Fukuda Museum and then visit Ryoan-ji Temple, known for its expertly maintained rock garden



Horyu-ji Temple, Kyoto

and peaceful paths. After lunch, discover Kyoto's private collections and galleries. Meet representatives of the Kyoto City Kyocera Museum of Art, which is emerging from a multiyear renovation project. Discover the reimagined museum, which has maintained its iconic architecture while improving the display of its comprehensive collection of art, from Western-style paintings to local *nihonga* (Japanese-style paintings), sculptures, crafts, calligraphy, and prints. Enjoy a celebratory champagne reception in this striking space. This evening, savor a truly special farewell dinner at a local restaurant in the company of a *maiko* (apprentice geisha), who will share the incredible history of her craft. Dine on a traditional multi-course meal called *kaiseki ryori*, a culinary art form that balances the taste, texture, appearance, and colors of food. During the evening, the *maiko* will perform traditional dances and teach popular Japanese drinking games. B, L, R, D

Kyoto / Return

Monday, October 9

Depart the hotel early this morning for flights home.

B

This itinerary is subject to change at the discretion of The Metropolitan Museum of Art and Arrangements Abroad. For complete details, please carefully read the terms and conditions at www.arrangementsabroad.com/terms.



Train Suite Shiki-shima design detail

Program Rates (per person)

Cabin Categories	Double Rates	Single Rates
Suite	\$29,999	\$44,999
Deluxe Suite	\$38,999	-----
Maisonette Suite	\$49,999	-----

Rate Includes

- Ten nights hotel/train/onsen accommodations as per itinerary
- All meals as indicated in the itinerary (B=Breakfast, L=Lunch, R=Reception, D=Dinner); bottled water, coffee/tea, soft drinks, and juices with all meals; beer, wine, and cocktails at all meals
- Airport/hotel/airport group or private transfers for all participants from Narita Airport into Tokyo and from Kyoto to Kansai Airport
- Bullet train (Tokyo-Odawara-Kyoto)
- Enrichment program of lectures and special events
- Taxes, service, and portage charges; gratuities to local guides and drivers

Not included in rate

International airfare; passport/visa fees; meals not specified; alcoholic beverages other than noted in inclusions; personal items and expenses; airport transfers other than included above; excess baggage; trip insurance; any other items not specifically mentioned as included.

Accommodations

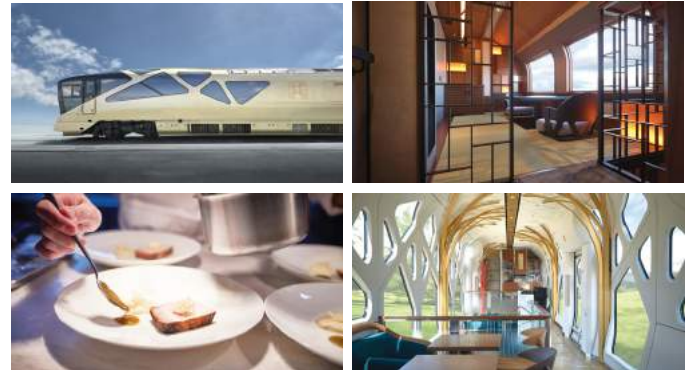
Train Suite Shiki-shima

The Peninsula Tokyo

Walking distance from the Ginza shopping district, the Peninsula Tokyo was named a "Forbes Travel Guide Five-Star hotel" in 2019. Enjoy its commanding views of the city skyline, excellent dining options, and meticulous service.

The Ritz-Carlton, Kyoto

In the midst of the ancient Japanese capital, retreat to the Ritz-Carlton's immaculately designed and spacious rooms and suites. Sumptuous amenities include a luxury spa with indigenous treatments, 24-hour fitness center and indoor pool, and complimentary Wi-Fi.



Photos clockwise from top left: Train Suite Shiki-shima; Suite; Lounge; and cuisine

Deep North of Japan: September 28–October 9, 2023

Reservation Form

To secure your reservation, please call Arrangements Abroad at 844-TRVLMET (844-878-5638); email: met@arrangementsabroad.com; or complete this form and return it with your deposit of \$1,000 per person (of which \$500 is non-refundable for administrative fees), to be paid by debit card, credit card, wire transfer, or check payable to *Arrangements Abroad*. Mail to: Arrangements Abroad, 260 West 39th Street, 17th Floor, New York, NY 10018-4424.

Name(s) in full. Please print.

Address

City State Zip

Telephone (home) (business)

Fax Email

Accommodations

Train Suite Shiki-shima cabin preference _____

Hotel room preference One bed Two beds Single

I wish to share a room with _____

Form of Payment

Check (payable to *Arrangements Abroad*) Debit card Credit card

Name on debit/credit card

Debit/credit card number

3- or 4-digit security code

Expiration date

Each participant must sign below. I/We have read, understand and agree to the Terms & Conditions at www.arrangementsabroad.com/terms and detailed in program documents. I/We agree to full payment 120 days prior to departure.

Signature (required)

Date

Signature (required)

Date

For additional information, please call 844-TRVLMET (844-878-5638) or to opt out from receiving mail, email travelwiththemet@metmuseum.org



Journey to the Deep North of Japan: Tokyo to Hokkaido Aboard the *Train Suite Shiki-shima* September 28–October 9, 2023

The Metropolitan
Museum of Art

1000 Fifth Avenue
New York, NY 10028



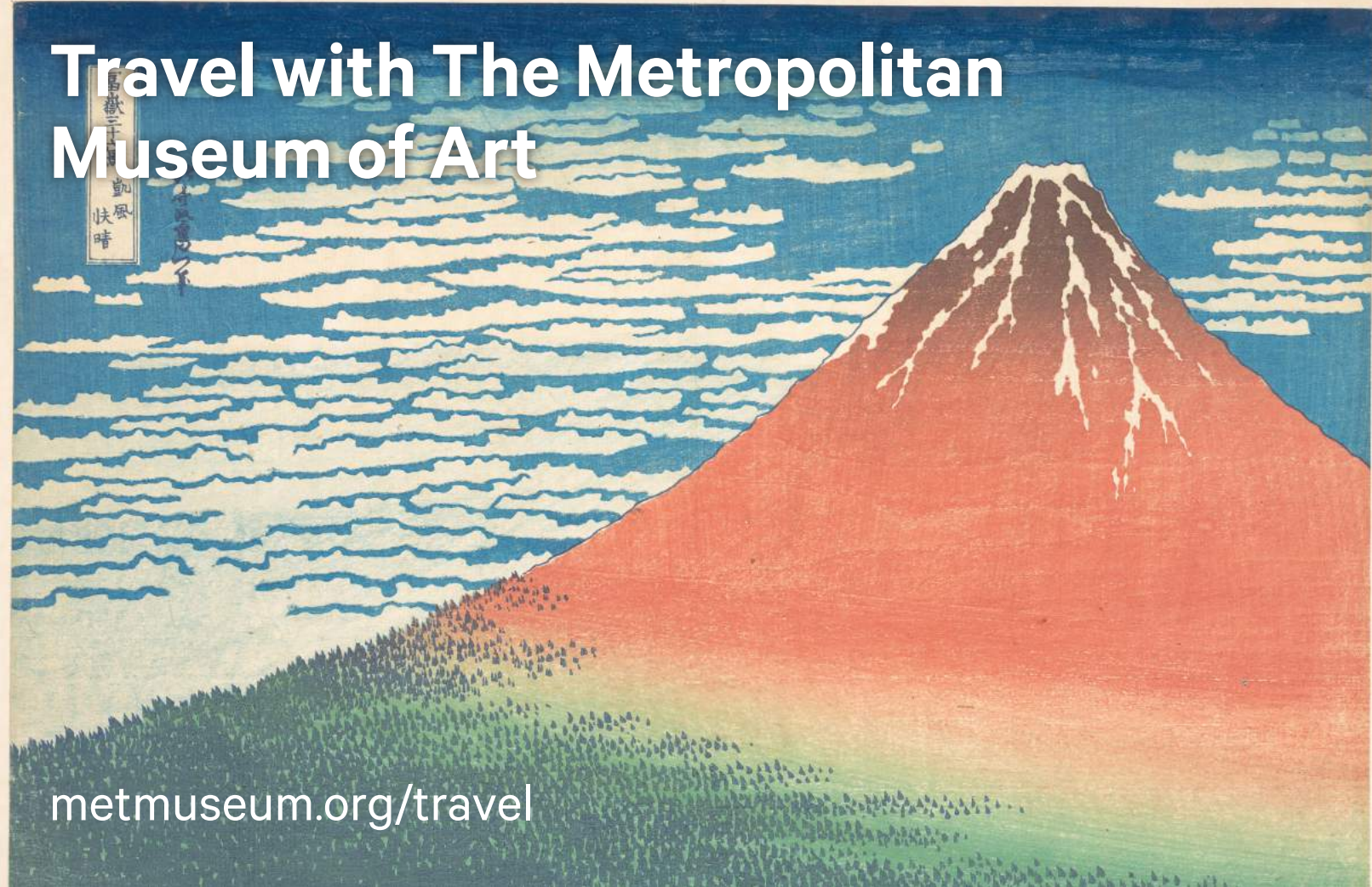
Interior spread: *Train Suite Shiki-shima* Observation Car.

Front cover: *Poem by Sarumaru Dayū*, from the series *One Hundred Poems Explained by the Nurse (Hyakunin isshu uba ga etoki)*, 1839. Katsushika Hokusai (Japanese, Tokyo (Edo) 1760–1849 Tokyo (Edo)). Polychrome woodblock print; ink and color on paper. The Metropolitan Museum of Art, Gift of Louis V. Ledoux, 1931 [JP2403].

Back cover: *Train Suite Shiki-shima* (top); *South Wind, Clear Sky (Gaifū kaisei)*, also known as *Red Fuji*, from the series *Thirty-six Views of Mount Fuji (Fugaku sanjūrokkei)* ca. 1830–32. Katsushika Hokusai (Japanese, Tokyo (Edo) 1760–1849 Tokyo (Edo)). Polychrome woodblock print; ink and color on paper. The Metropolitan Museum of Art, The Howard Mansfield Collection, Purchase, Rogers Fund, 1936 [JP2568] (bottom).

B_230928SHINRT_MET CST 2059789-40

Travel with The Metropolitan Museum of Art



metmuseum.org/travel